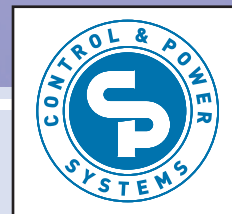


# CPAT

*Control & Process Analytical Technology*



## ON-LINE DATA ANALYSIS REAL TIME CONTROL & RELEASE

*PAT – Process Analytical Technology represents a significant opportunity to reduce time to market, improve and optimize your process as well as lower manufacturing costs in all aspects of a pharmaceutical and biological development and manufacturing operation. The challenge of any PAT project is the combination and control of a wide variety of instruments from different vendors that are uniformly integrated with industry standard data analysis software packages while making real-time process equipment control decisions with a seamless and easy to use operator interface that includes reporting, data storage and 21 CFR Part 11 compliance.*

### Compatible with Any Instrument

CPAT interfaces with any instrument that has a communications port capable of providing data and allowing control. NIR Spectrometer, HPLC, FTIR and many others.

### Modeling, Chemometrics, Multivariate & Univariate Data Analysis

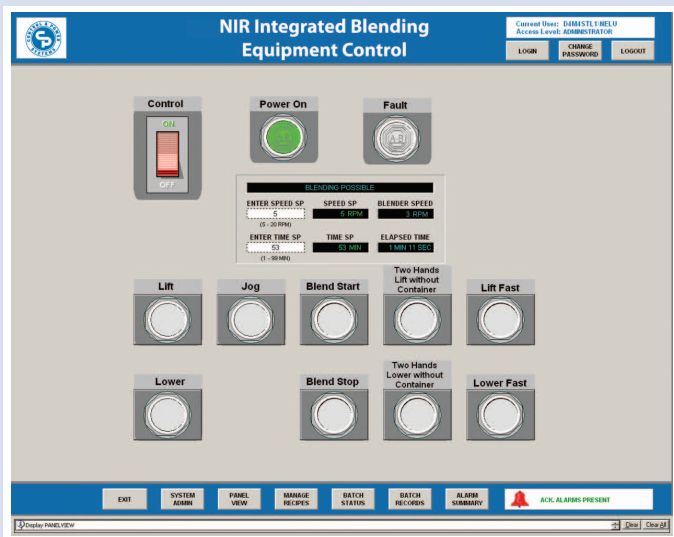
CPAT utilizes standard off the shelf software products such as MatLab, Umetrics, Unscrambler, etc. to perform modeling, chemometric and multivariate – univariate data analysis.

### End Point Determination, Prediction & Critical Quality Attributes

CPAT integrates the results from the data analysis tools with the real time process and equipment control systems to help make real time release decisions.

### Consulting, Integration and Turnkey Installation

Control & Power Systems, Inc. (CPS) has 3 decades of automation and consulting experience to guide you to a successful integration and implementation of a CPAT system.



## S88 Batch Automation

CPAT can be integrated into your existing S88 Batch automation system as a phase or unit operation.

## Easy To Use Operator Interface

CPAT provides application specific process graphics and trends, operator controls and diagnostic/alarm management. If you have a site wide automation system then CPAT can be used within your existing SCADA or information management interface. Methods and recipes are stored and managed by CPAT.

## Data Storage and Archiving

CPAT provides the option for local data storage or the use of your plant wide data historian/servers/databases.

## Process Control System Interface

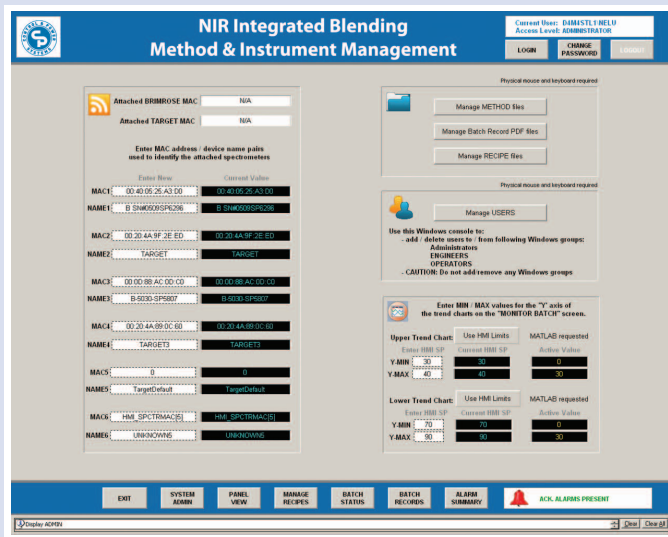
CPAT interfaces with every major brand of Process/PLC/DCS control system through the use of industry standard bidirectional communications (OPC, Profibus, Ethernet, etc.)

## Security

To assure system and data integrity CPAT offers configurable security levels. CPAT supports the use of company security access codes to log in, operate and modify the system (Domain Security) or simply local access security.

## Batch Reporting

CPAT offers a variety of reporting options. CPAT can generate reports locally or the CPAT data can be used with other database or report packages.



## Three Decades of Experience

For over three decades, Control & Power Systems' (CPS) in-house staff has engineered, designed, programmed, fabricated, installed, formally tested and validated thousands of process automation skids and control systems. Every CPS system is developed and tested to the highest quality standards following GAMP and QbD principles. CPS' commitment to on-time delivery and the pursuit of customer satisfaction is uncompromising.



17 Spielman Road  
Fairfield, NJ 07004  
973.575.3300 Tel.  
973.575.5300 Fax  
www.c-p-s.com

