

# CONTROL & POWER SYSTEMS, INC.

## Company Overview

Custom Control Solutions and Turnkey Automation Systems since 1979

### ENGINEERING SERVICES

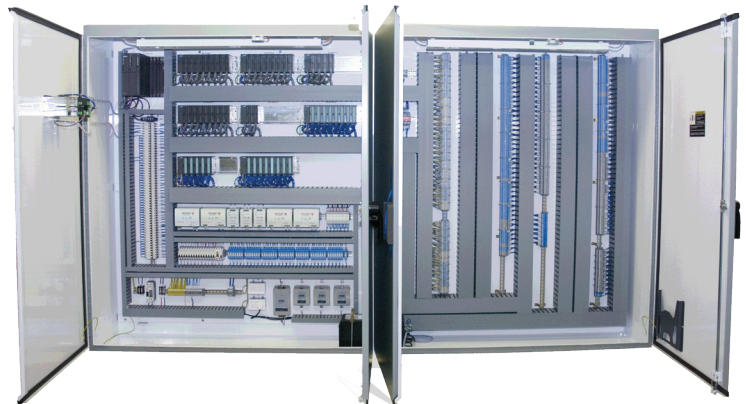
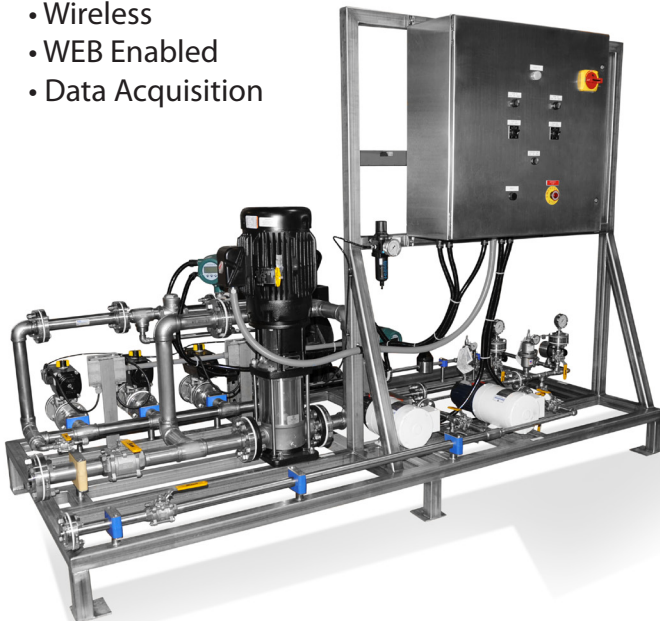
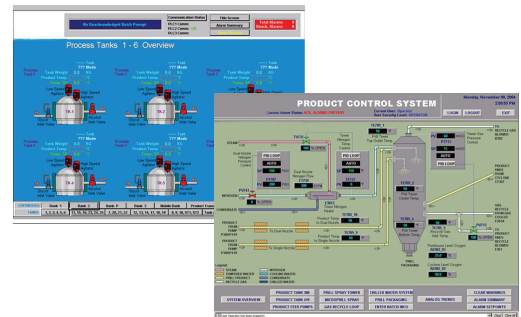
- Lifecycle Documentation
- Functional Requirement Specification (FRS)
- Control Strategy Development
- Hardware Specification (HDS)
- Software Specification (SDS)
- Detailed Design Specification (DDS)
- Instrumentation Specification
- Mechanical Skid Design
- CAD Drawings (2D, 3D)
- PLC/DCS Programming
- MMI, SCADA Configuration

### FABRICATION SERVICES

- Custom Skid Fabrication
- Control Panel Fabrication
- UL (508A, 698A, 698B), CUL, CE Certification
- Intrinsically Safe
- Explosion Proof
- Welding
- Electrical & Power
- Piping & Tubing
- Pneumatic & Hydraulic Systems
- Painting
- Installation

### INTEGRATION SERVICES

- S88 Batch
- Electronic Batch Records (EBR)
- 21 CFR Part 11
- PLC Systems (Every Major Brand)
- SCADA Software (Every Major Brand)
- Data Bases (Every Major Brand)
- Historians
- Networking
- Wireless
- WEB Enabled
- Data Acquisition

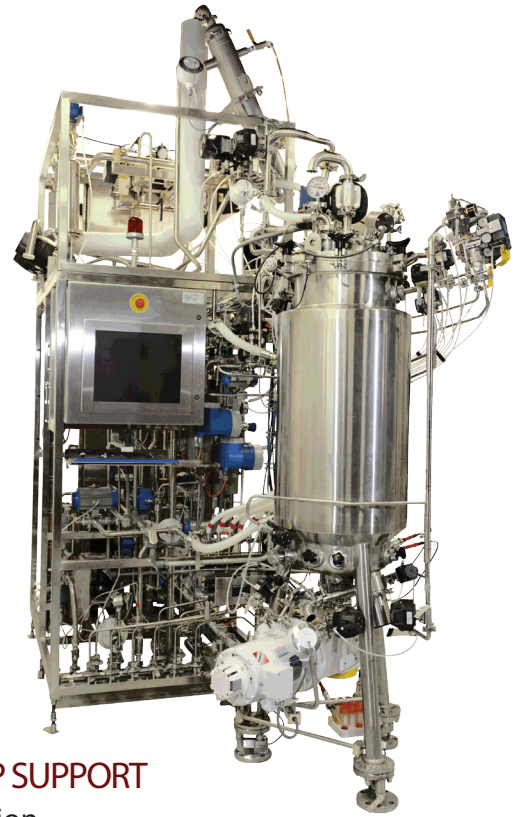


## QUALITY ASSURANCE

- Formal and Audited Quality Management System
- Factory and Site Acceptance Testing
- System Performance Tests
- Full Service Test Center
- Electric, Hydraulic, Pneumatic
- System Commissioning

## INSTRUMENTATION

- Engineering
  - Specification & Selection
- Installation
  - Mounting, Tubing, Wiring
- Calibration
  - ISA Certification
  - NIST Traceable
- Service Contracts



## START-UP SUPPORT

- Calibration
- Commissioning
- Loop Tuning
- Validation

## VALIDATION SERVICES

- Risk Based Validation Strategies
- Functional and Detailed Design
- Documents
- IQ/OQ Protocols
- 21 CFR Part 11 Assessments

## COMPANY INFO

- In business since 1979
- 29,000 square foot facility
- Over 35 employees
- Successfully completed thousands of projects
- Single point responsibility (one-stop-shop)
- Unparalleled craftsmanship and quality



17 SPIELMAN ROAD  
FAIRFIELD, NJ 07004  
973.575.3300 TEL  
973.575.5300 FAX  
C-P-S.COM WEB

CONTROL & POWER SYSTEMS, INC.

